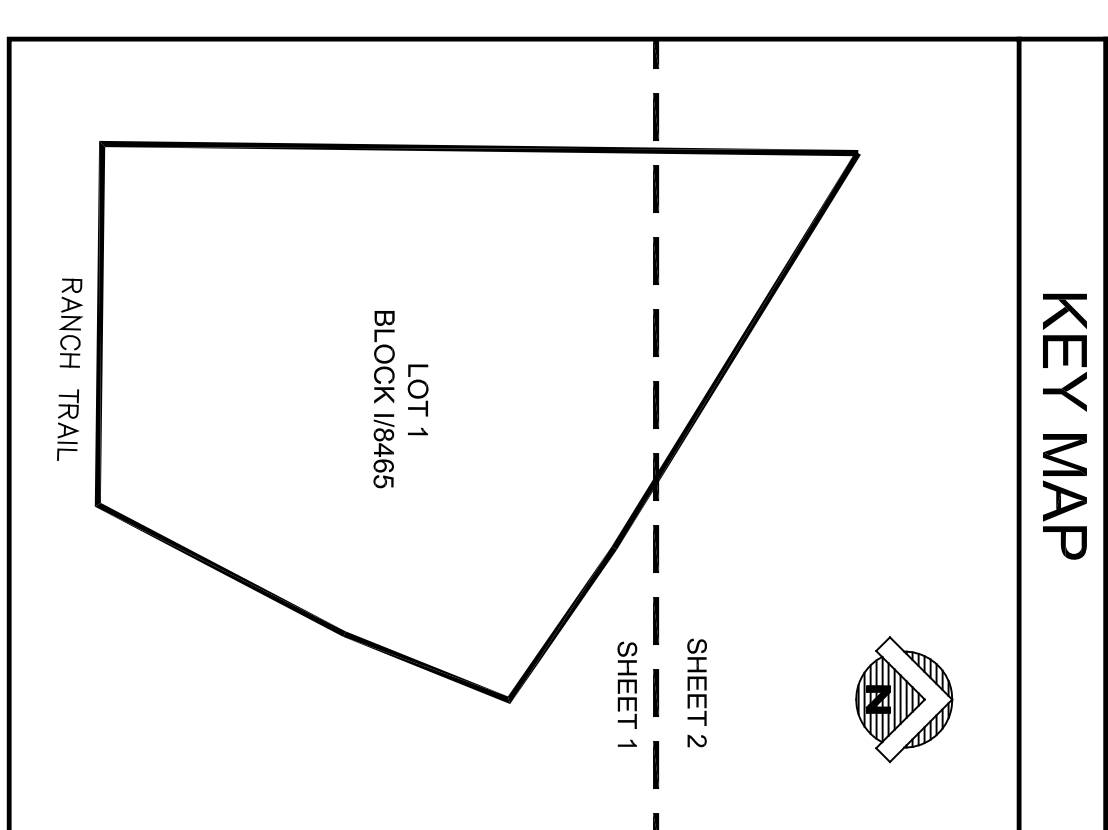
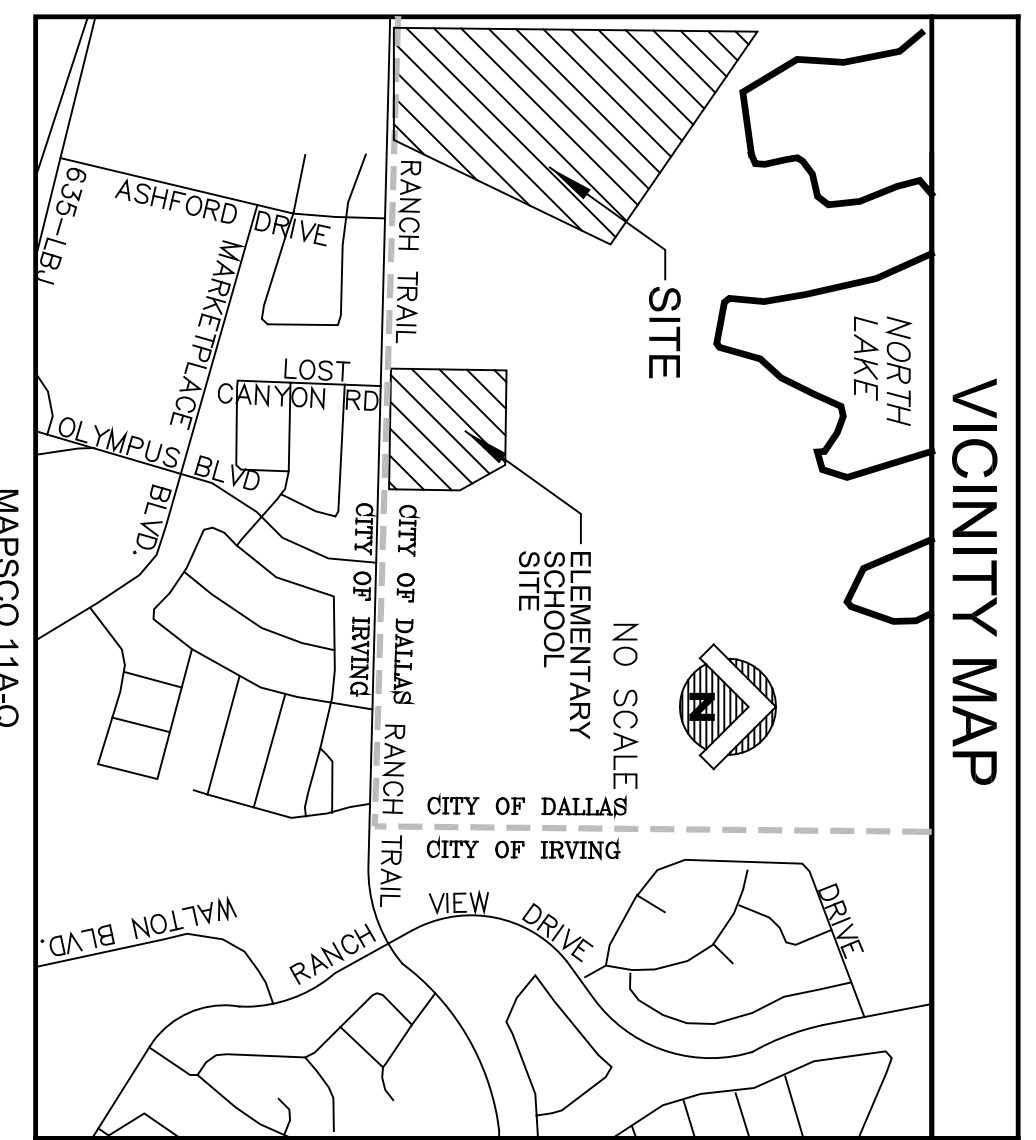
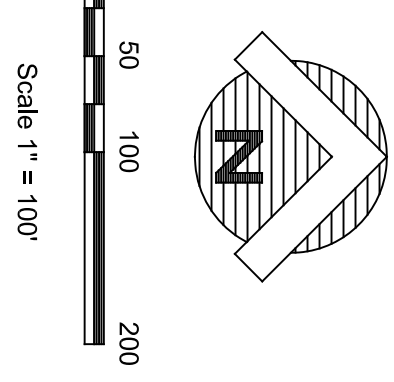
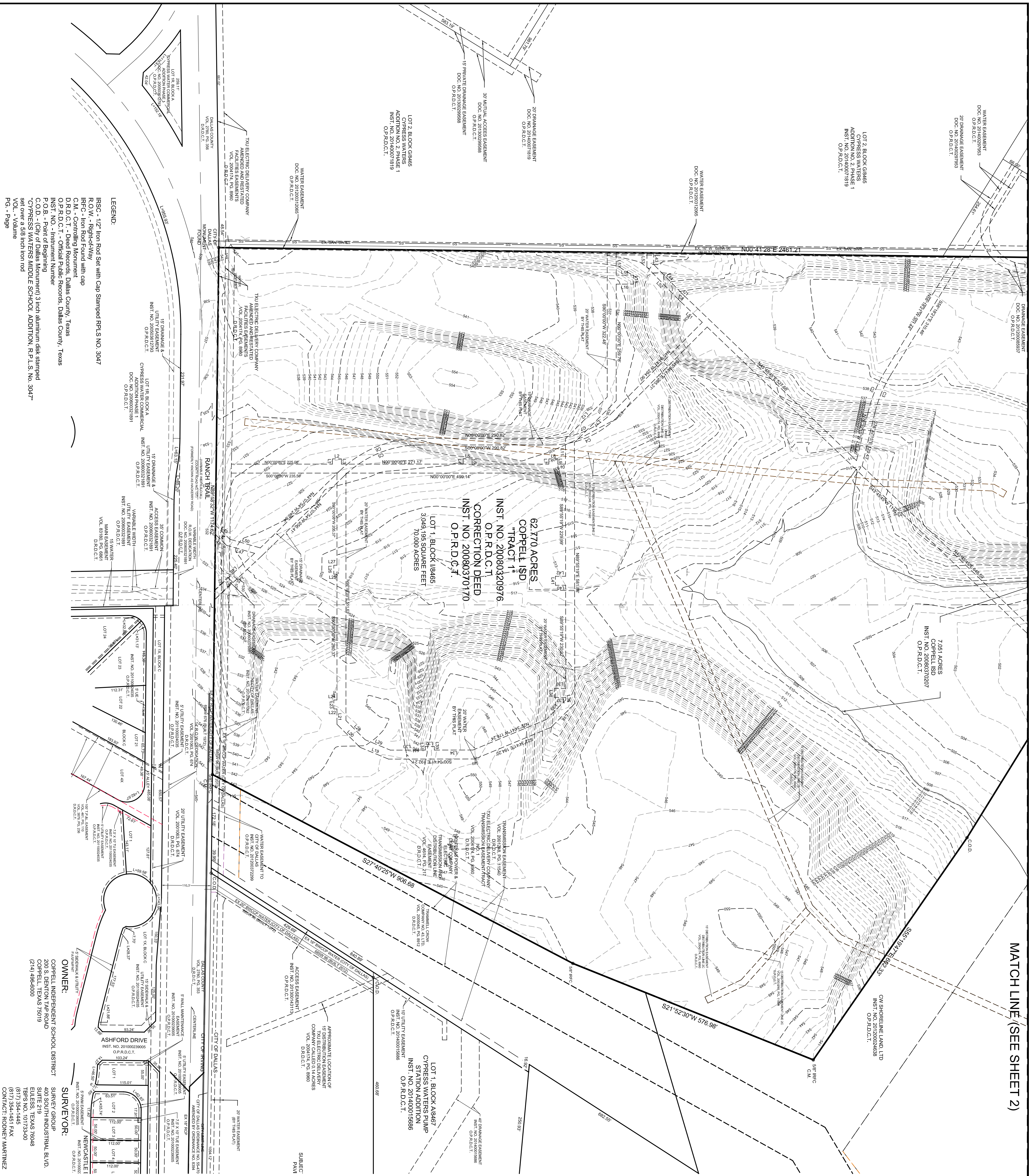


MATCH LINE (SEE SHEET 2)



- GENERAL NOTES:**
1. Basis of Bearing - The bearings shown hereon are based on Correction Special Warranty Deed recorded under Instrument No. 20080370170, Official Public Records, Dallas County, Texas, the south line of Tract 2, a called 12,000 acre tract held as North 89 deg. 08 min. 31 sec. West.
 2. Lot-to-lot drainage is not permitted without Engineering Section approval.
 3. The purpose of this plat is to create ONE (1) lot out of three tracts totaling 70,000 acres.
 4. Coordinates shown are Texas State Plane Coordinate System, North Central Zone, North American Datum of 1983 on Grid Coordinate values, no scale and no projection.
 5. The are no building, trees or other structure on the property.

PRELIMINARY PLAT
CYPRESS MIDDLE SCHOOL ADDITION
 LOT 1, BLOCK 18465
 JOHN L. WHITMAN SURVEY,
 ABSTRACT NO. 1521 AND
 SAMUEL LATON SURVEY,
 ABSTRACT NO. 784
 CITY OF DALLAS, DALLAS COUNTY, TEXAS

ENGINEER:
 GLENN ENGINEERING CORP.
 105 DECKER COURT, SUITE 910
 IRVING, TEXAS 75062
 TEL: 972-715-5151
 (972) 717-2778 FAX
 CONTRACT: MIKE GLENN, P.E.

SURVEYOR:
 COPPELL INDEPENDENT SCHOOL DISTRICT
 200 S. DENTON TAP ROAD
 COPPELL, TEXAS 75019
 (214) 586-0600

OWNER:
 COPPELL INDEPENDENT SCHOOL DISTRICT
 400 SOUTH INDUSTRIAL BLVD.
 SUITE 219
 COPPELL, TEXAS 75048
 TBS: NO. 101725400
 (817) 354-1451 FAX
 CONTRACT: RODNEY MARTINEZ

NOVEMBER 11, 2016

Sheet 1 of 3

LEGEND:
 IRSG - 1/2" Iron Rod Set with Cap Stamped R.P.L.S. NO. 3047
 IRSC - 1/4" x 1/4" x 1/4" with cap
 C.M. - Controlling Monument
 D.R.D.C.T. - Deed Records, Dallas County, Texas
 O.P.R.D.C.T. - Official Public Records, Dallas County, Texas
 INST. NO. - Instrument Number
 P.O.B. - Point of Beginning
 C.O.D. - (City of Dallas Monument) 3 inch aluminum disk stamped
 "CYPRESS WATERS MIDDLE SCHOOL ADDITION, R.P.L.S. No. 3047"
 set over a 5/8 inch iron rod
 O.C. - Volume
 P.S. - Page